

Hasil Uji Normalitas

Descriptive Statistics

	N	Mean	Std. Deviation	Minimum	Maximum
VAR00001	314	79.5605	5.84719	54.00	97.00
VAR00002	314	74.2452	8.62164	44.00	95.00
VAR00003	314	39.9395	6.62068	26.00	57.00

One-Sample Kolmogorov-Smirnov Test

		VAR00001	VAR00002	VAR00003
N		314	314	314
Normal Parameters ^{a, b}	Mean	79.5605	74.2452	39.9395
	Std. Deviation	5.84719	8.62164	6.62068
Most Extreme Differences	Absolute	.051	.057	.074
	Positive	.049	.038	.074
	Negative	-.051	-.057	-.044
Kolmogorov-Smirnov Z		.901	1.013	1.318
Asymp. Sig. (2-tailed)		.392	.256	.062

a. Test distribution is Normal.

b. Calculated from data.

Hasil Mean, Median, Modus, dan Histogram

Statistics

		VAR00003	VAR00001	VAR00002
N	Valid	314	314	314
	Missing	0	0	0
Mean		39.9395	79.5605	74.2452
Median		39.0000	80.0000	75.0000
Mode		36.00 ^a	84.00	72.00
Sum		12541.00	24982.00	23313.00

a. Multiple modes exist. The smallest value is shown

Daftar Distribusi Frekuensi

VAR00001

		Frequency	Percent	Valid Percent	Cumulative Percent
Valid	54.00	1	.3	.3	.3
	62.00	1	.3	.3	.6
	63.00	1	.3	.3	1.0
	66.00	1	.3	.3	1.3
	67.00		.3	.3	1.6
	68.00	3	1.0	1.0	2.5
	69.00	3	1.0	1.0	3.5
	70.00	3	1.0	1.0	4.5
	71.00	12	3.8	3.8	8.3
	72.00	11	3.5	3.5	11.8
	73.00	9	2.9	2.9	14.6
	74.00	13	4.1	4.1	18.8
	75.00	16	5.1	5.1	23.9
	76.00	14	4.5	4.5	28.3
	77.00	19	6.1	6.1	34.4

78.00	23	7.3	7.3	41.7
79.00	20	6.4	6.4	48.1
80.00	25	8.0	8.0	56.1
81.00	17	5.4	5.4	61.5
82.00	23	7.3	7.3	68.8
83.00	17	5.4	5.4	74.2
84.00	26	8.3	8.3	82.5
85.00	14	4.5	4.5	86.9
86.00	13	4.1	4.1	91.1
87.00	6	1.9	1.9	93.0
88.00	6	1.9	1.9	94.9
89.00	3	1.0	1.0	95.9
90.00	5	1.6	1.6	97.5
91.00	1	.3	.3	97.8
92.00	2	.6	.6	98.4
93.00	1	.3	.3	98.7
95.00	1	.3	.3	99.0
96.00	2	.6	.6	99.7
97.00	1	.3	.3	100.0
Total	314	100.0	100.0	

VAR00002

	Frequency	Percent	Valid Percent	Cumulative Percent
Valid 44.00	1	.3	.3	.3
48.00	1	.3	.3	.6
50.00	1	.3	.3	1.0
51.00	2	.6	.6	1.6
54.00	1	.3	.3	1.9
55.00	4	1.3	1.3	3.2

56.00	3	1.0	1.0	4.1
58.00	1	.3	.3	4.5
59.00	1	.3	.3	4.8
60.00	4	1.3	1.3	6.1
61.00	3	1.0	1.0	7.0
62.00	7	2.2	2.2	9.2
63.00	5	1.6	1.6	10.8
64.00	6	1.9	1.9	12.7
65.00	4	1.3	1.3	14.0
66.00	7	2.2	2.2	16.2
67.00	10	3.2	3.2	19.4
68.00	13	4.1	4.1	23.6
69.00	12	3.8	3.8	27.4
70.00	11	3.5	3.5	30.9
71.00	14	4.5	4.5	35.4
72.00	18	5.7	5.7	41.1
73.00	9	2.9	2.9	43.9
74.00	12	3.8	3.8	47.8
75.00	16	5.1	5.1	52.9
76.00	16	5.1	5.1	58.0
77.00	14	4.5	4.5	62.4
78.00	15	4.8	4.8	67.2
79.00	16	5.1	5.1	72.3
80.00	16	5.1	5.1	77.4
81.00	12	3.8	3.8	81.2
82.00	13	4.1	4.1	85.4
83.00	2	.6	.6	86.0
84.00	5	1.6	1.6	87.6
85.00	12	3.8	3.8	91.4
86.00	4	1.3	1.3	92.7

87.00	5	1.6	1.6	94.3
88.00	6	1.9	1.9	96.2
89.00	5	1.6	1.6	97.8
90.00	3	1.0	1.0	98.7
91.00	1	.3	.3	99.0
92.00	1	.3	.3	99.4
93.00	1	.3	.3	99.7
95.00	1	.3	.3	100.0
Total	314	100.0	100.0	

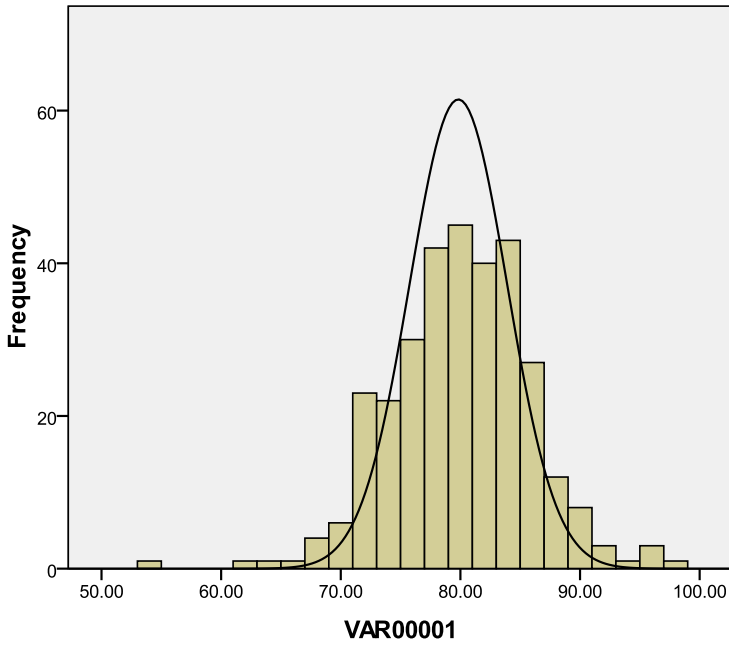
VAR00003

	Frequency	Percent	Valid Percent	Cumulative Percent
Valid 26.00	2	.6	.6	.6
27.00	3	1.0	1.0	1.6
28.00	1	.3	.3	1.9
29.00	6	1.9	1.9	3.8
30.00	8	2.5	2.5	6.4
31.00	4	1.3	1.3	7.6
32.00	15	4.8	4.8	12.4
33.00	13	4.1	4.1	16.6
34.00	17	5.4	5.4	22.0
35.00	20	6.4	6.4	28.3
36.00	21	6.7	6.7	35.0
37.00	15	4.8	4.8	39.8
38.00	15	4.8	4.8	44.6
39.00	21	6.7	6.7	51.3
40.00	17	5.4	5.4	56.7
41.00	19	6.1	6.1	62.7
42.00	19	6.1	6.1	68.8

43.00	10	3.2	3.2	72.0
44.00	8	2.5	2.5	74.5
45.00	12	3.8	3.8	78.3
46.00	15	4.8	4.8	83.1
47.00	8	2.5	2.5	85.7
48.00	6	1.9	1.9	87.6
49.00	5	1.6	1.6	89.2
50.00	8	2.5	2.5	91.7
51.00	5	1.6	1.6	93.3
52.00	7	2.2	2.2	95.5
53.00	5	1.6	1.6	97.1
54.00	5	1.6	1.6	98.7
55.00	2	.6	.6	99.4
56.00	1	.3	.3	99.7
57.00	1	.3	.3	100.0
Total	314	100.0	100.0	

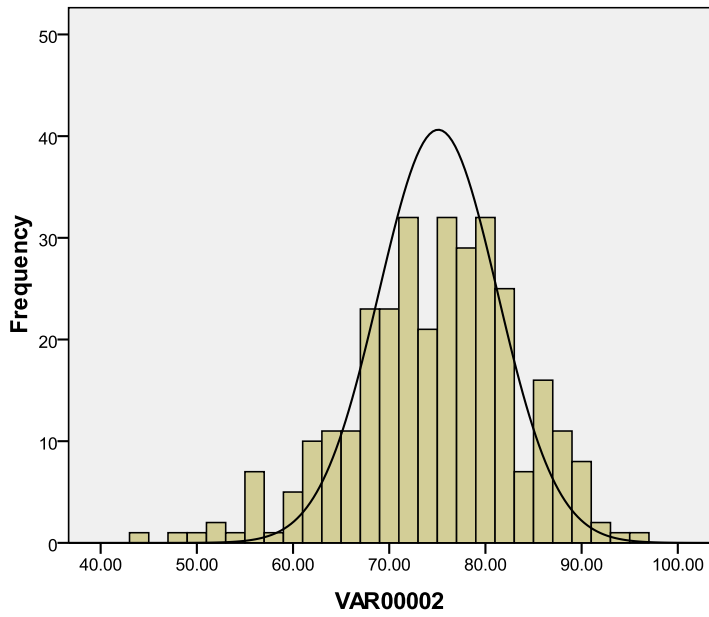
Histogram

VAR00001



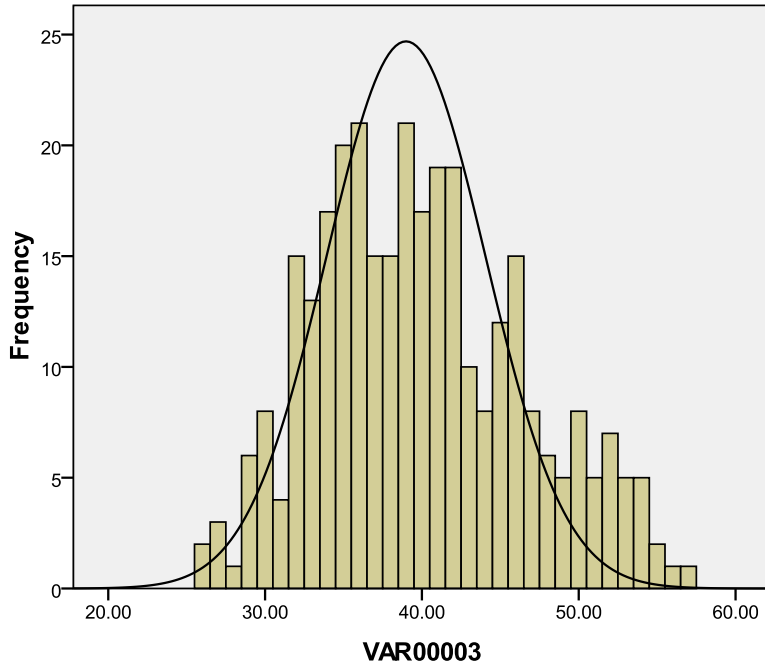
Mean =79.56
Std. Dev. =5.847
N =314

VAR00002



Mean =74.25
Std. Dev. =8.622
N =314

VAR00003



Mean =39.94
Std. Dev. =6.621
N=314